

**KUNKLE SAFETY AND RELIEF PRODUCTS**  
 MODELS 215V AND 337

Model 215V is non-code vacuum relief. PED certified for non-hazardous gas.

Model 337 is ASME Section VIII Air/Gas "UV" National Board Certified Safety Valve. PED certified for non-hazardous gas.



Model 215V



Model 337

**Model descriptions**

**Model 337:** has "lift-pin" lift device for easy manual testing.

**Model 215V:** seal cap for vacuum service

All adjustments are factory sealed to help prevent tampering or disassembly.

**Option**

- Stainless Steel (SS) trim. (nozzle and disc) (variation 03)

**Technical data**
**Vacuum Limits**
**Model 215V:**

2" Hg to 29" Hg [67.7 to 982 mbarg]  
 -20° to 406°F [-29° to 208°C]

Code: **CE**

**Pressure and Temperature Limits**
**Model 337:**

1 to 60 psig [0.07 to 4.1 barg]  
 -20° to 406°F [-29° to 208°C]

Code: **UV CE**

**Note:**

1. ASME Valves made from cast iron; A126 may not be used for lethal or flammable service.

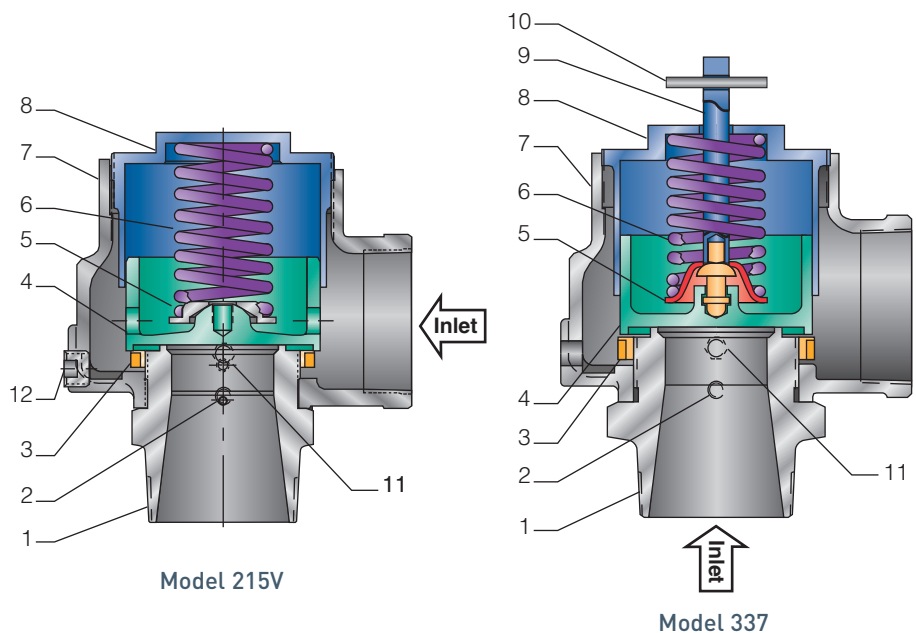
**Features**

- Large nozzle design provides high capacity.
- Flat bronze valve seats are lapped for optimum performance.
- Warn ring offers easy adjustability for precise opening with minimum preopen or simmer.
- Pivot between disc and spring corrects misalignment and compensates for spring side thrust.
- Each Kunkle valve is tested and inspected for pressure setting and leakage.

**Applications**

- Protection of low to medium pressure high volume blowers, compressors and pneumatic conveying systems.
- Bulk hauling trailers/equipment.
- Light gauge tanks.
- Protection of high volume vacuum pumps and conveying systems.

### Parts and Materials



#### Models 215V and 337

No.	Part Name	215V	337
1	Nozzle <sup>1</sup>	Bronze, SB62 or Brass B283-C48500	Bronze, SB62 or Brass B283-C48500
2	Set Screw	Steel A108-1018 Brass Plated	Steel A108-1018 Brass Plated
3	Regulator Ring	Bronze B584 Alloy 84400	Bronze B584-C84400
4	Disc <sup>1</sup>	Bronze B584 Alloy 84400	Bronze B584-C84400
5	Spring Step	Steel A-109 Coated <sup>3</sup>	Steel A109 Coated <sup>3</sup>
6	Spring	SS, A313 TY 302	SS A313-302
7	Body	Cast Iron A-126, CL A or B	Iron A-126, CL A or B
8	Compression Screw	Bronze, B-584 Alloy 84400	Bronze, B584-C84400
9	Stem <sup>2</sup>	N/A	Brass B16
10	Lift Pin <sup>2</sup>	N/A	Steel, Zinc Plated
11	Regulator Ring Set Screw	N/A	Brass B16
12	NPT Drainplug	Steel A108-1018	N/A

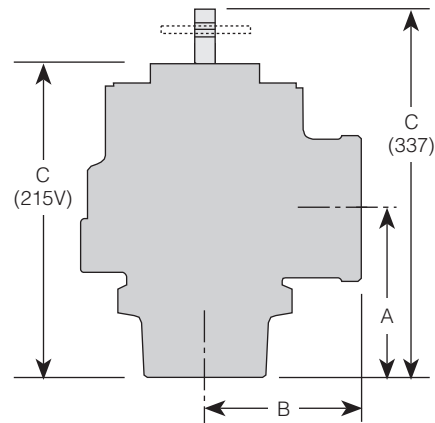
#### Specifications

Size Inlet and Outlet	Dimensions, in [mm]				Weight lb [kg]
	A	B	C 215V	C 337	
2" [50.8 mm]	3 1/4 [82.5]	3 [76.2]	6 1/2 [165.1]	7 [177.8]	8 [3.6]
2 1/2" [63.5 mm]	3 3/4 [95.2]	3 1/2 [88.9]	7 5/8 [194.6]	8 [203.2]	12 [5.4]
3" [76.2 mm]	4 1/4 [107.9]	4 [101.6]	8 1/2 [215.9]	9 [228.6]	20 [9.07]

Dimensions are for reference only.

#### Notes:

1. Disc and nozzle available in SSA-479 TY 316.
2. Stem and lift pin available on Model 337 only.
3. Corrosion preventative coating.



Model 337

**Capacities**

<b>Model 337, Non-code<sup>1</sup> and ASME Section VIII Air (SCFM)</b>			
<b>Set Pressure (psig)</b>	<b>Valve Inlet and Outlet Size</b>		
	<b>2"</b>	<b>2 1/2"</b>	<b>3"</b>
	<b>1.915</b>	<b>Orifice Area, in<sup>2</sup> 2.79</b>	<b>4.04</b>
1	240	364	527
5	531	805	1166
10	741	1124	1628
15	948	1436	2081
20	1092	1656	2399
25	1237	1875	2718
30	1382	2095	3036
35	1542	2337	3386
40	1701	2578	3736
45	1860	2820	4086
50	2020	3061	4436
55	2179	3303	4786
60	2338	3544	5136

**Note:**

1. No code stamp or "NB" on nameplate below 15 psig set.

<b>Model 337, Non-code<sup>1</sup> and ASME Section VIII Air [Metric, Nm<sup>3</sup>/h]</b>			
<b>Set Pressure [barg]</b>	<b>Valve Inlet and Outlet Size</b>		
	<b>50 mm</b>	<b>63 mm</b>	<b>80 mm</b>
0.5	1049	1589	2303
1.0	1457	2208	3200
1.5	1888	2861	4147
2.0	2235	3387	4910
2.5	2613	3959	5739
3.0	2995	4538	6579
3.5	3377	5117	7418
4.0	3760	5696	8258

**Note:**

1. No code stamp or "NB" on nameplate below 1.1 barg set.

<b>Model 215V, Non-code Vacuum Air (SCFM)</b>			
<b>Relief Set (in, HG)</b>	<b>Valve Inlet and Outlet Size</b>		
	<b>2"</b>	<b>2 1/2"</b>	<b>3"</b>
	<b>1.915</b>	<b>Orifice Area, in<sup>2</sup> 2.79</b>	<b>4.04</b>
2	229	347	503
5	338	512	742
10	415	630	912
15	426	646	936
20	426	646	936
29	426	646	936

**Note:**

1. Based on 10% accumulation.

<b>Model 215V, Non-code Vacuum Air [Metric, Nm<sup>3</sup>/h]</b>			
<b>Relief Set [mbarg]</b>	<b>Valve Inlet and Outlet Size</b>		
	<b>5.08 cm</b>	<b>6.35 cm</b>	<b>7.62 cm</b>
	<b>[12.35 cm<sup>2</sup>]</b>	<b>Orifice Area [17.97 cm<sup>2</sup>]</b>	<b>[26.05 cm<sup>2</sup>]</b>
50	328	498	722
100	450	682	988
150	533	807	1170
200	593	899	1303
250	638	966	1400
300	669	1014	1470
350	690	1046	1516
400	701	1062	1540
450	704	1067	1546
500	704	1067	1546
550	704	1067	1546
600	704	1067	1546
650	704	1067	1546
700	704	1067	1546
750	704	1067	1546

**Note:**

1. Based on 10% accumulation.

# KUNKLE SAFETY AND RELIEF PRODUCTS

MODELS 215V AND 337

## Model Number/Order Guide

Model Number Position	1	2	3	4	5	6	7	8	9	10	11	12	13	14	15
-----------------------	---	---	---	---	---	---	---	---	---	----	----	----	----	----	----

Example	2	1	5	V	—	H	0	1	A	Q	E	0	0	5	0
---------	---	---	---	---	---	---	---	---	---	---	---	---	---	---	---

### Model

215V  
0337

### Inlet Size

H - 2" [50.8 mm]  
J - 2 1/2" [63.5 mm]  
K - 3" [76.2 mm]

### Variation

01 - Bronze Disc and Nozzle  
03 - SS Disc and Nozzle  
60 - BSP Connections

### Design Revision

Indicates non-interchangeable revision.  
Current Design is at Revision "A."

### Valve Service

K - Air ASME Section VIII (Model 337 only)  
Q - Vacuum (Model 215V only)  
N - Non-code Air/Gas (Model 337 only)

### Spring Material

E - SST Type 302  
(H-Orifice up to 8 psi; J-Orifice up to 20 psi; K-Orifice up to 25 psi)  
M - SST Type 17-7  
(H-Orifice above 8 psi; J-Orifice above 20 psi; K-Orifice above 25 psi)

### Set Pressure

Model 337, 1 psig [0.7 barg] (0001) to 60 psig [4.1 barg] (0060)  
Model 215V, 2" Hg [68 mbarg] (0002) to 29" Hg [982 mbarg] (0029) vacuum



5500 WAYZATA BLVD # 800, MINNEAPOLIS, MN 55416 WWW.PENTAIR.COM/VALVES  
KUNKLE FACILITY PHONE: 1-828-669-3700 • WWW.KUNKLEVALVE.COM

All Pentair trademarks and logos are owned by Pentair, Ltd. All other brand or product names trademarks or registered marks of their respective owners. Because we are continuously improving our products and services, Pentair reserves the right to change specifications without prior notice. Pentair is an equal opportunity employer.